

BAXTER COUNTY, ARKANSAS
TERRORISM

ANNEX M

I. INTRODUCTION

A. In June 1995, Presidential Decision Directive 39 (PDD-39), “*United States Policy on Counterterrorism*” was issued. PDD-39 directed a number of measures to reduce the national vulnerability to terrorism, to deter and respond to terrorist acts, and to strengthen capabilities to prevent and manage consequences of terrorist use of nuclear, biological, and chemical (NBC) weapons, including weapons of mass destruction (WMD).

B. Terrorism

1. Terrorism is the unlawful use of force against persons or property to intimidate or coerce a government, the civilian population, or any segment, thereof, in the furtherance of political or social objectives (FBI).
2. Terrorists often use threats to create fear among the public, to try to convince citizens that their government is powerless to prevent terrorism, and to get immediate publicity for their causes.
3. The FBI categorizes terrorism in the United States as one of two types:
 - a. Domestic terrorism involving groups or individuals whose terrorist activities are directed at elements of our government or population without foreign direction.
 - b. International terrorism involving groups or individuals whose terrorist activities are foreign-based and/or directed by countries or groups outside the United States or whose activities transcend national boundaries. (FBI)

C. Categories of Terrorist Incidents: B-NICE

1. Biological: Exposure from inhalation and ingestion of Bacteria, Virus, Rickettsia, and Toxins.
2. Nuclear: Use or threat of detonation of nuclear bomb or detonation of conventional explosive containing nuclear material in order to disperse radiation. Exposure caused by inhalation and ingestion of substance. Burns to the body are possible from various types and levels of radiation.
3. Incendiary incidents: Fire caused by many devices ranging from simple to complex. Devices can be categorized into three types: electrical, mechanical, or chemical.

4. Chemical incidents: Nerve agents; blister agents; choking agents; and irritating agents.
 - a. Nerve agents include Sarin (GB), Soman (GD), Tabun (GA), and V agent (VX). (NOTE: First letter of code denotes country that developed the agent. The second letter denotes order of the development. Except for VX, V stands for Venom and X represents one of the chemicals in the compound.)
 - b. Blister agents usually are either Mustard based (H, HD) or Lewisite (L).
 - c. Choking agents stress the respiratory tract. Severe distress causes edema (fluid in the lungs) which can result in asphyxiation. Examples: Chlorine and Phosgene gas.
 - d. Irritating agents are used for riot control and are designed to incapacitate. Agents cause burning of eyes and throat, respiratory distress, and digestive system problems. Examples: Chloropicrin, MACE (CN), tear gas (CS), capsicum/pepper spray, and dibenzoxazepine (CR)
5. Explosions: Seventy (70) percent of all terrorist attacks involve explosives.

II. SCOPE and PURPOSE

A. Scope

1. This Annex applies to all threats or acts of terrorism that could occur within Baxter County, as well as Marion, Boone, Fulton, and IZard Counties surrounding Baxter County.
2. It describes the local, state, and federal response and builds upon established policies and procedures already in place in Baxter County.
3. It also addresses the unique policies, assumptions, structures, responsibilities, and actions that will be necessary for successful implementation.

B. Purpose

To provide guidelines to maximize the safety of responding personnel and citizens, through training and education, and to enhance the preparedness of all response agencies within Baxter County.

III. SITUATION and ASSUMPTIONS

A. Situation

1. Today, our nation is more vulnerable to terrorism than ever before.
2. The effects of terrorism can vary significantly from loss of life and personal injury to property damage and disruption of essential services (such as electricity, water supply, public transportation, and communications).
3. Agreements exist between Baxter County and IZARD, FULTON, MARION, and BOONE counties. The Baxter County Hazardous Materials Response Team, based from the Mountain Home Fire Department, will respond to incidents in surrounding counties upon request.

B. Assumptions

1. Baxter County is vulnerable to subversive or direct attack by terrorists.
2. Weapons of Mass Destruction (WMD) are available to individuals or groups determined to utilize terrorism as a tool.
3. Acts of terrorism are prevalent throughout the world and have escalated in the U.S.
4. There is a need for all agencies and communities to prepare for this potential hazard.
5. Although each situation will be different, coordination between emergency response agencies is essential to help insure the effective control and mitigation of terrorism.

IV. THREAT ANALYSIS

A. Threat Assessment

Terrorist groups may include (but are not limited to):

1. Ethnic, separatist, and émigré groups;
2. Left-wing radical organizations;
3. Right wing racist, anti-authority, survivalist groups;
4. Foreign terrorist organizations;
5. Domestic Terrorist Organizations

6. Issue-oriented groups (animal rights groups, extremist environmental groups, extremist religious groups, anti-abortionist, etc.
- B. Risk Target Assessment (Potential targets may include:)
1. Civilian or military/government facilities;
 2. Financial institutions;
 3. Infrastructure components (i.e.: transportation, communications, utilities, or energy systems);
 4. Explosive magazine storage facilities (construction site, quarries, etc.);
 5. Sports arenas, parks, assembly areas;
 6. Schools, hospitals, shopping centers; and
 7. Venues for special events.

V. CONCEPT of OPERATIONS

A. General

1. Baxter County has overall responsibility for responding to and managing a terrorist incident.
2. An Incident Command System (ICS) will be used during a terrorist incident as a management structure. Coordination between all agencies is essential.
3. Due to the complexity involved in a terrorist incident, a Unified Command is recommended.
 - a. Unified Command provides a coordinated effort that allows all agencies with geographic or functional responsibility to manage the incident.
 - b. This is accomplished without losing or abdicating agency authority, responsibility, or accountability.
 - c. The concept of Unified Command means that all involved agencies contribute to the command process by:
 - 1) Determining overall objectives.

- 2) Planning jointly for operational activities while conducting integrated operations.
 - 3) Maximizing the use of all assigned resources.
- d. The following always apply under Unified Command:
- 1) The incident functions under a single coordinated Incident Action Plan (IAP).
 - 2) One Operations Section Chief has responsibility for implementing the IAP.
 - 3) One Incident Command Post (ICP) is established.

B. Phases of Emergency Management

1. Mitigation

Mitigation is an on-going responsibility that includes activities that prevent or reduce the probability of an incident occurring. Also included are those long-term activities that lessen the undesirable effects of unavoidable hazards.

- a. Develop and conduct training and education programs for emergency response agencies.
- b. Develop and conduct public information and awareness programs.
- c. Identify high-risk targets, determine vulnerabilities, and assess appropriate hazards to the affected population and environment.
- d. Establish checklists to increase readiness based on the levels of threat.
- e. Synchronize checklists between responding agencies.
- f. Establish communications and notifications protocols, including FBI Field Office, Arkansas Department of Emergency Management (ADEM), and the Federal Emergency Management Agency (FEMA) - Region VI.

2. Preparedness

Preparedness activities serve to develop the response capabilities needed in the event an emergency should arise. Planning and training are among the ongoing activities conducted to prepare for emergency response.

- a. Develop and conduct training for emergency response personnel.
 - b. Develop communications procedures that are specific to terrorism incidents.
 - c. Establish appropriate Mutual Aid Agreements (MAA) or Memorandums of Understanding (MOU).
 - d. Develop a Terrorism Annex to the County Emergency Operations Plan (C-EOP).
 - e. Exercise and evaluate response plans and procedures.
 - f. Develop and conduct public information and awareness programs for business, industry, and the public.
3. Response

Response is the actual provision of emergency services during a crisis. These activities protect life and property and speed recovery. Response activities include warning, evacuation, rescue, and other similar operations.

- a. First On The Scene
 - 1) First responders should be trained to (minimum) the awareness level in order to recognize key indicators of a potential terrorist threat.
 - a) Personnel safety is first!
 - b) Isolate scene and deny entry.
 - c) Notify appropriate emergency response agencies.
 - d) Establish command.
 - 2) Response Actions
 - a) Transfer of command.
 - b) Identify threat and its location.
 - c) Establish staging for deployment of SWAT and antiterrorist teams.
 - d) Operate in HAZMAT mode, including decon.
 - e) Establish effective and efficient communications with ALL response groups.

- f) Define the area at risk and control access.
 - g) Search for secondary devices.
 - h) WMD search and rescue.
 - i) Activate MAAs or MOUs, as needed.
 - j) Designate staging areas for responding MAA and volunteer resources.
 - k) Activate EOC and resource database.
 - l) Activate Shelter and Reception, if evacuation is necessary.
 - m) Establish crowd control measures.
 - n) Designate media staging and PIO activities, including a Joint Information Center (JIC).
 - o) Establish scene security.
 - p) Implement investigative procedures and activities.
 - q) Activate National Disaster Medical System (NDMS) for mass casualty operations, if necessary.
- b. Once the federal government becomes officially involved and a federal agency becomes the lead agency, all local and state agencies will act in support of the federal response.
 - c. Local and state authorities always maintain control of their response resources and continue to operate while the FBI integrates into the ICS used on scene.

4. Recovery

Recovery is both a short-term and long-term process. Short-term operations seek to restore vital services to the community and provide for the basic needs of the public. Long-term recovery focuses on restoring the community to its normal (or improved) state of affairs.

- a. Continued awareness of the potential of secondary devices.
- b. Decontamination of scene(s).

- c. Assessment of structurally unsafe buildings and structures.
- d. Extinguish all fires.
- e. Identify potential fire hazards, such as damaged gas lines, downed power lines, and residual hazardous materials.
- f. Remediation and cleanup of toxic materials, including local water and sewer systems.
- g. Continued awareness of the possibility of the presence of biological toxins and their immediate and long-term effects.
- h. Provide traffic control, security for staging areas, and return of evacuees.
- i. Continue public information and awareness activities through the PIO/JIC.
- j. Document the incident and response, including detailed reports, expenditure accounting, personnel allocation, and disbursement of funds.
- k. Debrief workers, volunteers, and response personnel.
- l. Restore normal services.
- m. Care for the sick and injured.
- n. Prepare temporary morgues for reception of casualties, if necessary.

VI. RESPONSIBILITIES

A. General

1. The primary law enforcement agency (sheriff/police chief) will designate a deputy/officer who will be assigned to the Emergency Operations Center (EOC). A SO/PD official will be assigned to the on-scene Command.
2. Each law enforcement agency will be responsible for operations within its respective jurisdiction and for coordination with the on-scene Command. Additional information may be found in Annex D – Law Enforcement of the C-EOP.

3. Once a federal agency becomes the lead agency, all local and state agencies will act in support of the federal response, as per the “U.S. Policy on Counterterrorism, Presidential Decision Directive (PDD) 39” and the “Federal Response Plan (FRP),” guidance documents to this Annex.
4. The county emergency management coordinator will serve as liaison to Command and provide logistical support, as requested.
5. The deputy emergency management coordinator will be responsible for coordinating EOC operations.
6. Each fire department will be responsible for fire suppression activities within its assigned jurisdiction and for coordinating all activities with command. Additional information may be found in Annex E – Fire & Rescue of the C-EOP.
7. Emergency medical services (EMS) is responsible for coordinating those pre-hospital functions or services that are provided on-scene in response to medical emergencies. Additional information may be found in Annex H – Health and Medical of the C-EOP.
8. All operations on-scene will be performed as per SOPs.
9. Baxter County OEM will coordinate requests for resources from the state and federal governments.
10. All mutual aid departments and resources will be under the direction of the on-scene Command.
11. Mutual aid personnel will work under the immediate control of their designated supervisors, who will coordinate all activities with on-scene Command.

B. Specific Responsibilities

1. Specific responsibilities are defined in each agency’s policies and procedures, which serve as guidance documents to this Annex.
2. All policies and procedures will be in coordination with the on-scene Command.

C. Levels of Management

No single agency has the authority or capability to act alone in addressing a terrorist incident. Federal and state response is differentiated as *crisis management* and *consequence management*. Technical support and various other areas are addressed at both the federal and state levels.

1. Crisis Management (CM¹)
 - a. CM¹ is the law enforcement response and focuses on the criminal aspects of the incident.
 - b. It involves local, state, and federal law enforcement agencies.
 - c. The Federal Bureau of Investigation (FBI) has the lead role.
 - d. Components
 - 1) Activities to anticipate, prevent, and/or resolve a threat or incident.
 - 2) Identify, locate, and apprehend the perpetrators.
 - 3) Investigate and gather evidence to support prosecution.
2. Consequence Management (CM²)
 - a. CM² is the response to the disaster and focuses on alleviating damage, loss, hardship, or suffering.
 - b. CM² includes federal, state, and local volunteer and private agencies.
 - c. FEMA has the lead role.
 - d. Components
 - 1) Activities to protect public health and safety.
 - 2) Restore essential government services.
 - 3) Provide emergency assistance to affected governments, businesses, and individuals.
 - e. The laws of the United States assign primary authority to the states to respond to the consequences of terrorism. The federal government will provide assistance as required.
3. See Arkansas Department of Emergency Management Terrorism Annex for the State's responsibilities.
4. See Federal Response Plan--Terrorism Incident Annex

In the event that Federal assistance is needed at a terrorist incident, FEMA will activate the Terrorism Incident Annex of the Federal Response Plan (FRP). This

describes the federal concept of operations to implement PDD-39 when necessary to respond to terrorist incidents within the United States. (See Attachment 4 – Joint Operations Center Structure, this Annex.)

VIII. PLAN DEVELOPMENT and MAINTENANCE

It is the responsibility of each agency to ensure its own operational capabilities.

This annex is effective immediately and will be updated as necessary. It will be reviewed and updated (at least) annually by the Baxter County OEM.

XI. REFERENCES

Federal Response Plan for PL93-288, 1992, as amended.

Presidential Decision Directive 39, 1999.

Emergency Response to Terrorism (Self Study), August 1997 (Internet)
Arkansas EOP

North American Emergency Response Guidebook (current edition)

Jane's Chem-Bio Handbook (1998 edition)

XII. ATTACHMENTS

Attachment 1: Joint Operations Center Structure

XIII. APPENDICES

Appendix 1: Nuclear Terrorism Response

Appendix 2: Bomb Threats

A-2-1: Bomb Threat Report

A-2-2: Bomb Threat Procedure

A-2-3: Bomb Threat Procedure – Suspicious Package Found

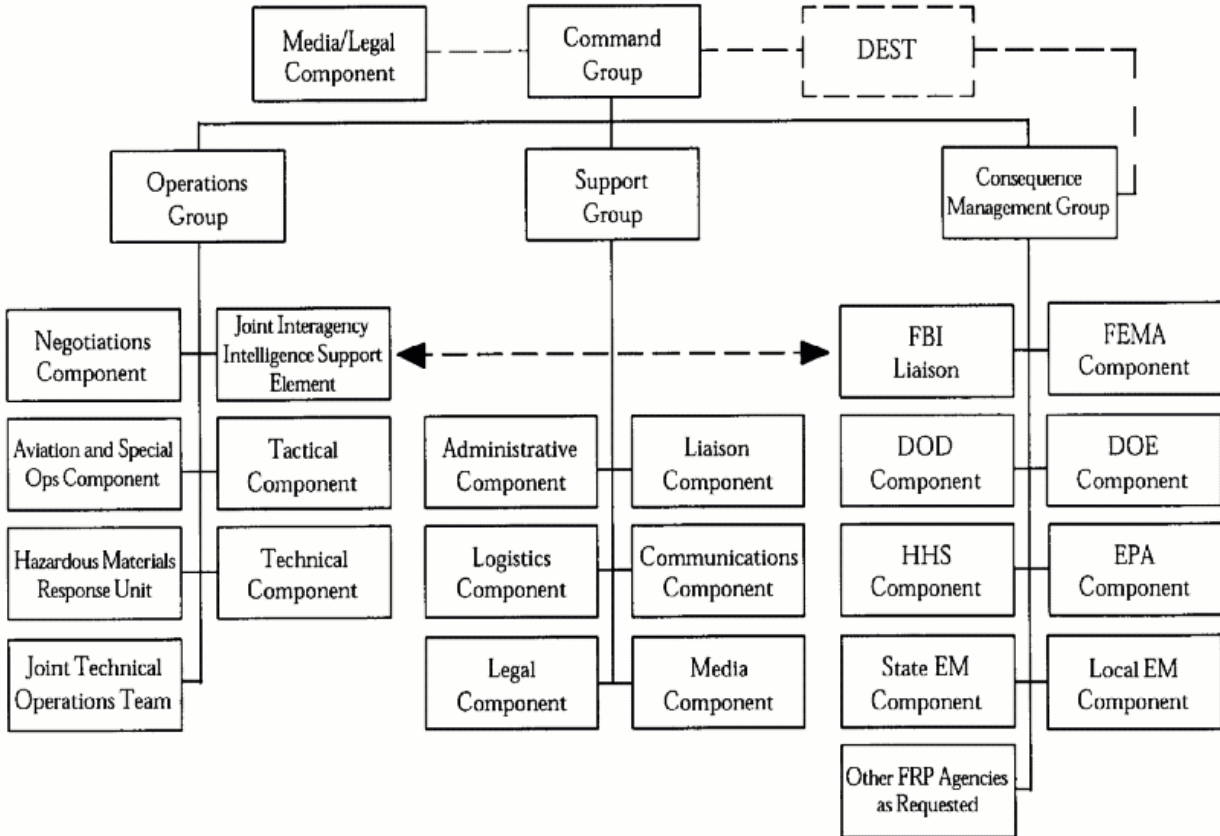
Appendix 3: Chemical Terrorism Response

A-3-1: Chemical/Biological Information Form

Appendix 4: Biological Terrorist Response

Appendix 5: Contamination of Water Supplies by Terrorists

ATTACHMENT 1
JOINT OPERATIONS CENTER STRUCTURE



APPENDIX 1
NUCLEAR TERRORISM RESPONSE

I. SITUATION

- A. Primary responsibility for an incident involving an improvised nuclear weapon rests with the federal government and is defined in “The Federal Bureau of Investigation, Department of Defense, and Department of Energy Joint Agreement for Response to Improvised Nuclear Device Incident.”
- B. Types of nuclear terrorist threats:
 - 1. Dispersal of radioactive material other than plutonium and uranium.
 - 2. Detonation of a conventional bomb salted with radioactive materials (Plutonium, Strontium, or other known radioactive isotope).
 - 3. Detonation of an improvised nuclear explosive device.
 - 4. Detonation of a nuclear weapon.

II. CONCEPT of OPERATIONS

- A. Under federal law the federal government assumes the responsibility of responding to any incident involving the criminal misuse of nuclear materials, to include improvised nuclear devices, nuclear dispersal devices, or stolen nuclear weapons.
- B. As “first responders” local and state government agencies will be responsible for carrying out their normal emergency responsibilities as defined in the C-EOP and state EOP.
- C. Once federal agents arrive on the scene and assume responsibility for finding the weapon, deactivating the weapon, or dealing with the consequences of the weapon, local and state agencies will provide support to requesting federal agencies by carrying out any protective action not in conflict with the federal response.
- D. Upon the federal government assuming responsibility the FBI will establish the necessary liaison with DOD, DOE, FEMA, ADEM, and local officials as designated by the County Judge/Mayor.
- E. Federal Tasks

The following outline of agency tasks and responsibilities is provided for guidance and should be the basis for developing supporting plans and operating procedures.

1. FBI—Although local government is responsible for the protection of the public health and safety from nuclear hazards, the FBI (by Federal Statute) is the lead investigative agency in all cases involving radioactive material. As the lead agency, the FBI is responsible for the investigative functions while the aspects of search and assessment of a nuclear threat is delegated to DOE, or to the state. In addition the FBI will:
 - a. Alert FBI headquarters and all appropriate local, state, and federal agencies;
 - b. Coordinate all investigative efforts with the military and civilian law enforcement agencies involved;
 - c. Assist in the assessment of the threat;
 - e. Coordinate news releases regarding all aspects of the threat and operations;
 - f. Provide a location at, or near, the FBI command center for representatives of all assisting agencies to receive updates, commit resources, and coordinate all activities; and
 - g. Other responsibilities as outlined.

2. DOE—With threats involving Special Nuclear Material (SNM) DOE will accept responsibility for control and coordination of the nuclear aspects of the operation. In addition, upon arrival, DOE will provide radiological assistance to the state and local agencies having the regularly constituted authority for the protection of the general public health and safety in accordance with Interagency Radiological Assistance Plan. Representatives of DOE, or its Nuclear Emergency Search Team (NEST) will integrate operationally with the FBI and other agencies. Duties include:
 - a. Alert state and other federal agencies, as appropriate;
 - b. Assist in the threat assessment;
 - c. Assist in the search for, and analysis of, the nuclear device in accordance with current DOE plans;
 - d. Prepare input regarding nuclear and radiological aspects of the threat and operations for news releases.

3. DOD—Will have primary responsibility for incidents involving military weaponry and other threats as follows:
 - a. Military Weapons: In threats involving military nuclear weapons the responsible military service, or the FBI has jurisdiction. However, when control of the

nuclear weapon is lost into the civilian sector the FBI assumes jurisdictional responsibility for recovery and control of the weapon.

- b. Other Threats: DOD will provide technical support when requested through the FBI. Such support will include those functions within the purview of DOD and to the extent that the principal military mission is not compromised. These functions will include, but are not limited to:
 - 1) Assist in providing security;
 - 2) Assist in locating the device; and
 - 3) Assist in deactivating and removing the device.
6. FEMA—Will have the responsibility for coordinating the emergency planning and close out operations following resolution of criminal aspects of the nuclear misuse. Once the device is deactivated and secured, or clean-up operations commence, FEMA will assume command of the incident from the FBI.
7. Pursuant to PDD-39 and FEMA 229, the FBI will assume command and control of the incident management while criminal misuse activities exist. This means that all agencies will be expected to cooperate under the direction of the FBI.
8. This document shall not supersede any DOD directive currently in effect regarding the handling of DOD special devices. It is meant for clarification purposes only.

F. Response

1. Should a nuclear threat occur that requires meeting deadlines or making concessions during a very short time interval, the local agency receiving the threat may, by necessity, have to respond using only those skills and resources immediately available. Concessions to demands in nuclear extortion are of national interest and must be carefully evaluated. However, the nearest FBI field division, ASP, and ADEM should be notified immediately of the threat. These agencies will alert additional resources and persons in order to have them available as quickly as possible.
2. Some threat demands may provide time for a more deliberate, orderly and effective response. This will permit a more thorough evaluation of the threat. The following guidelines provide a basis for response action:
 - a. The Threat
 - 1) Nuclear threats may be received by phone, mail, courier services, tape recordings, or electronic transmission. Regardless of the mode in which is

it received the individual or agency receiving the threat should preserve all materials and information for investigative purposes.

- 2) This and all other information regarding the threat must be forwarded to the FBI as soon as possible, as a part of the notification process. Because the exact wording and tone of a threat message can be of invaluable assistance in determining the credibility and potential hazard associated with the threat, it is imperative that the exact wording and tone be conveyed accurately.
 - 3) Everything associated with the threat should be handled carefully and preserved as evidence for future examination and evaluation by experts. As few people as possible should physically touch the evidence.
- b. Threat Credibility Assessment: The FBI, in conjunction with DOE, ASP, and local law enforcement agencies involved, will provide for assessment of the threat. Credibility must be continuously reviewed and assessed as investigative and search intelligence is acquired.
- c. Coordination Between Agencies:
- 1) The nucleus of agencies with immediate interest will be (minimum) the FBI, FEMA, DOE, DOD, ASP, ADEM, County OEM, and NR&EPC. The FBI, as lead investigative agency, will coordinate with all involved agencies in order to maintain continuity and cohesiveness of the actions taken. Command decisions will be made with regard to the discharge of their responsibilities as the situation develops.
 - 2) An EOC may be established where the involved agencies can meet to evaluate information, make operational decisions (based on the available information), and to solve the technical problems involved in the search, identification, and removal of any device.
 - 3) One Joint Information Center (JIC) will be established through which all agencies will communicate with the Media. Due to the potential for public panic in this type of situation no releases will be made without approval and coordination with Command. Public Information Officers (PIOs) from the different agencies will assist in the media coordination of the event.
- d. Investigation: The investigation of a viable threat is a basic responsibility of the FBI. However, the cooperation of all involved agencies is essential to an effective investigation.
- e. Search:

- 1) Once it has been determined that the nuclear threat is credible and protective actions commensurate with the situation have been taken a search for the device should begin. Sophisticated search equipment will be provided by NEST. Premature searching may arouse public awareness and unwanted concern. If the response time is very short, the responding local agency or ASP should start the search.
- 2) When the demands are to be met in a longer time period, search for a nuclear device will be conducted by NEST, as requested by the FBI, with appropriate local and state agencies assisting.
- 3) Prior to the arrival of NEST, a visual search by persons familiar with the area may be conducted. Concurrent with this search, law enforcement, in cooperation with the FBI will provide as much additional information as possible about the threat and its source.
- 4) If radiation detection equipment is used in the initial search it should be remembered that commonly available meters (including RADAF meters) are incapable of, at best, unreliable for the detection of alpha, beta, or low energy gamma emitters.

f. Device Located

- 1) If a suspected nuclear device is found during the search prior to the arrival of NEST, the area should be evacuated and other protective measures taken. DOE will advise the area to be evacuated. Prior to the arrival of trained EOD personnel NO ATTEMPT shall be made to neutralize, deactivate, or move the device.
- 2) When a military nuclear weapon is involved, a military EOD team will handle the deactivation and removal of the weapon.
- 3) If an improvised device is involved, designated personnel from DOE and DOD (who are familiar with design characteristics of nuclear weapons or improvised devices) will determine the appropriate actions to be taken.
- 4) If a nuclear weapon is found, only DOE nuclear weapons experts and/or specially trained EOD teams will be involved.

g. Protective Action

- 1) Protective actions are non-sequential because it may be necessary to institute them at any time, or reapply them as a situation develops. They should be considered in two phases:

- a) Those actions (preventative) taken to prevent loss of life, injury, or destruction of property, and
 - b) Those actions (restorative) that would be taken if the threat should be carried out.
- 2) ADH (Radiation Division) is responsible for recommending protective actions to the Governor and/or the Director of ADEM, in accordance with the state EOP.
- h. Medical: In the event of a nuclear detonation or the dispersal of radioactive materials, special medical care may be required for irradiated and/or contaminated patients. Most hospitals are not equipped with adequate facilities with trained personnel for required treatment. Thus, cases of severe exposure should be directed to qualified medical centers.
- 1) Local: Local government is responsible for planning and coordinating medical services during the emergency. The medical plan shall provide for:
- a) Identification, coordination, and control of local medical emergency response forces.
 - b) Medical planning including destination, training, and exercising medical facilities and personnel.
 - c) Special medical treatment and services required for treating radiation exposed and/or contaminated patients.
 - d) Coordination of assistance provided by hospitals, clinics, medical associations, health, and other societies and quasi-governmental groups.
- 2) State: ADH is responsible for emergency medical care in support of local government and will provide:
- a) Technical advice.
 - b) Procurement of special equipment and services, such as whole body counters, laboratory services, decontamination facilities, and the disposal of radioactive waste.
 - c) Emergency procurement, storage, distribution, and handling of supplemental medical supplies.
 - d) Liaison with ADEM.

- e) Procedures for procuring medical assistance from other state agencies.
 - 3) Federal: Federal agencies will provide technical assistance, equipment, and supplementary resources in support of medical operations.
- i. Health: After the spread of radioactive materials special health problems result from the contamination. Therefore, plans for health services must address this problem, as well as normal sanitation and other health concerns.
 - 1) Local: Local government is responsible for providing health and sanitation services. These services include, but are not limited to:
 - a) Personnel decontamination.
 - b) Sanitation in reception centers.
 - c) Inspection of food to determine radioactive contamination.
 - d) Protection of agricultural products from contamination.
 - e) Procedures for procuring medical assistance from state agencies.
 - 2) State
 - a) ADEM will coordinate the efforts of all necessary state agencies to support local emergency operations.
 - b) ADH will have the responsibility for the administration and application of health service support and will provide resources, personnel, and technical advice.
 - 3) Federal: Appropriate agencies can provide supplementary emergency equipment, supplies, and technical support to local health authorities. Local jurisdictions should forward their requests to ADEM, which will notify FEMA for assistance from appropriate agencies.
- j) Public Information
 - 1) Even though information of all types and from many different sources will be processed, some will be more important than others will. In recognition of this fact and the necessity of using available public information facilities in the most efficient and effective manner, the following priorities are established.

- a) Lifesaving: Information essential to survival, health, and safety before, during, and after the incident.
 - b) Recovery: Information concerning disaster recovery and relief programs and services.
 - c) Other: Non-emergency information released by participating government and volunteer agencies.
- 2) Coordination of News Releases: In coordination with the FBI, all other involved agencies will be responsible for preparing releases pertaining to their activities. All state releases will be made through ADEM's PIO in coordination with the JIC.
- k) Restoration: The problems to be solved and the work required during restoration may be complicated by the presence of radioactive contamination. Thus, local government may require state and federal support.
- 1) Local: Local government is responsible for the evacuation of, and re-entry to, affected areas. Tasks that may have to be undertaken during this period include:
- a) Decontamination of property and food supplies.
 - b) Security of evacuated areas to prevent unauthorized entry and vandalism.
 - c) Mass care and welfare.
 - d) Monitoring of people and property for radiation contamination.
 - e) Transportation.
 - f) Identification and disposal of contaminated materials that cannot be decontaminated.
 - g) Engineer support.
 - h) Long-term radiation monitoring.
 - i) Control of radiation exposure to the public and workers.
 - j) Establish a program for dealing with long-term medical problems, in conjunction with state and federal agencies.

- 2) State: ADEM will coordinate state support during the emergency and recovery.
- 3) Federal: FEMA will provide assistance to state and local government upon request.

V. ADMINISTRATIVE SUPPORT

- A. Support of these operations will consist of assistance and cooperation from all applicable state agencies, local government, and necessary federal agencies.
- B. Resources committed to a nuclear terrorist emergency will be assigned in accordance with the precepts outlined in the C-EOP and State EOP.

APPENDIX 2 BOMB THREATS

I. SITUATION and ASSUMPTIONS

- A. There are two types of bomb threats:
 - 1. Hoax
 - 2. Confirmed
- B. Bomb threats are normally received by telephone or through the mail. They may also be transmitted electronically. Rarely are they made in person.
- C. All bomb threats must be treated as real until proven otherwise.
- D. The Bomb Threat Report should be filled out as the threat is received.
- E. Bombs may be sent by mail, courier/delivery service, or placed on site by an individual.
- F. For purposes of this Appendix, the term bomb shall include persistent irritant devices, i.e., Tear Agents, Oleoresin, Capsicum, etc.

II. MISSION

To provide the mechanism for recording and reporting bomb threats in order to assist in preparing an appropriate response to them. This is particularly applicable to government offices and facilities.

III. DIRECTION and CONTROL

- A. The building manager, or superintendent, is responsible for coordinating a search for a bomb in response to a threat.
- B. Each individual is responsible for searching his/her area for the bomb and reporting any suspicious objects to a supervisor before evacuating.
- C. The building manager/superintendent will order an evacuation of the building upon receipt of the threat.

IV. CONCEPT of OPERATIONS

- A. The building supervisor will be notified immediately of the bomb threat. He/she will have the occupants of the area search their areas for any suspicious objects. Whether a bomb or suspicious object is found or not, the area will be evacuated until after the deadline for the explosion of the bomb.

- B. The local law enforcement agency and fire department will be notified but will not take part in the search. Personnel familiar with the building will conduct the search.
- C. Appropriate emergency response agencies will enter the building only when a possible bomb is located.
- D. If a device is found, the bomb threat becomes a law enforcement matter. Even if a bomb is not found, the appropriate law enforcement agency should be notified as soon as practicable. All documentation should be made available to the police at the time of reporting.
- E. Direction and control of all activities at a bomb scene, which is declared a terrorist event, will be assumed by the local law enforcement until ASP and FBI respond.
- F. If no bomb is found after the initial search and no explosion takes place in the indicated time period, the building will be searched again before returning to normal operations.
- G. When the building is evacuated all personnel will report to designated assembly areas. They will remain there until their normal end of shift, or the building is declared safe to enter.
- H. Maintenance personnel should be used to search all public areas in and around the building.
- I. The explosion of a bomb in or near a building should be treated as a fire emergency, as well as a crime scene.
- J. ICS will be used in response to a bomb threat or explosion.

V. ATTACHMENTS

- A-2-1: Bomb Threat Report
- A-2-2: Bomb Threat Procedure
- A-2-3: Bomb Threat Procedure – Suspicious Package Found

**APPENDIX 2 – ATTACHMENT 1
BOMB THREAT REPORT**

INSTRUCTIONS: Remain calm, be courteous, listen, do not interrupt the caller. Notify supervisor/fellow worker immediately by prearranged signal WHILE the caller is on the line.

DATE:_____ **TIME RECEIVED:**_____ **TIME CALL ENDED:**_____

Exact wording of person making the call:_____

QUESTIONS TO ASK:

When is the bomb going to explode? _____

Where is the bomb now? _____

What kind of bomb is it? _____

What does it look like? _____

Why did you place the bomb? _____

TRY TO DETERMINE THE FOLLOWING (Circle as appropriate):

Caller's Identity: Male Female Adult Juvenile Child Age/Years _____

Voice: Soft High Pitched Deep Raspy Pleasant Intoxicated

Other (describe): _____

Accent: Local Regional (describe) _____ Foreign(country/region)_____

Speech: Fast Slow Distinct Distorted Stutter Nasal Lisp Slurred

Language: Excellent Good Fair Poor Foul Other (describe)_____

Manner: Calm Angry Rational Irrational Coherent Incoherent Deliberate

Emotional Righteous Laughing Other (describe): _____

Background Noises: Office Machines Traffic Factory Machines Bedlam

Quiet Trains Music Animals Voices Airplanes Street Party

ADDITIONAL INFORMATION: _____

Actions to take immediately after the call:

- Notify supervisory personnel as specified in written instructions.
- Talk to no one except as instructed by the supervisor.

Receiving Telephone Number

Person Receiving Call

**APPENDIX 2 – ATTACHMENT 2
BOMB THREAT PROCEDURES**

Courses of Action -- Depending on the Circumstances
CONCURRENT ACTIONS

IF NO BOMB FOUND

BOMB THREAT				
Action	Reaction	Emergency Team	Employee Related	
Telephone	<p>Keep caller on line as long as possible and obtain as much information as possible.</p> <p>Have call traced or recorded by police.</p> <p>Advise supervisor immediately.</p>	<p>Activate EOC.</p> <p>Activate bomb threat control team.</p> <p>Advise security staff and responsible building authority.</p> <p>Notify police and fire department.</p> <p>Evaluate threat.</p>	<p>Warn employees of danger. Have them visually check their work spaces and lock up.</p> <p>Restrict entry into the building.</p> <p>Restrict elevator use to handicapped (down) only.</p> <p>Evacuate employees.</p>	<p>Bomb threat control team searches public areas and evacuation routes more thoroughly.</p> <p>Maintenance staff conducts a detailed search of maintenance and utility areas.</p> <p>Have employees re-examine offices for suspicious objects.</p> <p>If no bomb found resume work.</p>
Note or Mail	<p>Minimum handling of letter or note (due to possible fingerprints).</p> <p>Advise supervisor immediately.</p>	<p>Bomb threat control team searches evacuation routes.</p> <p>Bomb threat control team searches common and public areas.</p> <p>Maintenance personnel search utility areas.</p>		

**APPENDIX 2 – ATTACHMENT 3
BOMB THREAT PROCEDURES – SUSPICIOUS PACKAGE FOUND**

Courses of Action -- Depending on the Circumstances

BOMB THREAT		CONCURRENT ACTIONS		IF NO BOMB FOUND
Action	Reaction	Emergency Team	Employee Related	
Suspicious Package Found	Advise Police and responsible building authority Do not touch or approach any suspicious package. Memorize area around package and details of package to report to explosives disposal team.	Activate EOC. Activate bomb threat control team. Notify police and fire department. Evaluate threat. Bomb threat control team searches evacuation routes. Maintenance staff search maintenance and utility areas.	Warn employees of danger. Have them visually check their work spaces and lock up. Restrict entry into the building. Restrict elevator use to handicapped (down) only. Evacuate employees.	Maintenance staff should conduct a detailed search of: 1. Public area. 2. Evacuation routes. 3. Maintenance and utility area. 4. cursory search of office area. If police dogs. or explosive detection are available have building searched by them. If no detonation takes place by the next working day, request that all employees carefully search their office areas when reoccupying the building.

APPENDIX 3 CHEMICAL TERRORISM RESPONSE

I. SITUATIONS and ASSUMPTIONS

- A. The threat of a chemical-based terrorist attack is a highly possible event in today's society because of the ready availability of chemical compounds and agents. The release of chemical agents in population centers offers the terrorists minimum exposure, dramatic impact on society with relatively little expense, and requires only a moderate level of technical expertise.
- B. Since terrorists are interested in maximizing the impact of their attacks, this tactic offers a highly feasible format. Dispersal may be by various means, including:
 - 1. Mechanical (including aerosol dispersion).
 - 2. Explosive.
 - 3. Natural (including release into prevailing winds or waters).

II. PURPOSE

To provide for the safe, effective response to a terrorist attack which involves the use, or threatened use, of a chemical agent or compound as a weapon.

III. DIRECTION and CONTROL

- A. Since the nature of chemical agents is closely associated with known chemical compounds, the response to their use will be conducted with a heavy reliance on operating procedures found in Annex L – Hazardous Materials Emergency Response Procedures.
- B. Response to a chemical terrorism incident poses a high level of exposure and threat to all responding personnel. Therefore, basic knowledge of techniques of self-protection is necessary for an effective, safe response.
 - 1. First responders will maintain appropriate use of Time, Distance, and Shielding concepts.
 - 2. All personnel should be provided training in these techniques from their respective emergency response agency. Compliance with these guidelines is essential.
 - a. Time

- 1) Spend the shortest amount of time possible in the hazard area and minimize the time of exposure to the hazard.
- 2) Use time to protect yourself at the crime scene.
- 3) Use techniques such as rapid entries to execute reconnaissance or rescue.
- 4) Minimizing time spent in the affected area will also reduce the chance of contaminating the crime scene.

b. Distance

- 1) Maximize your distance from the hazard area or from the project hazard area.
- 2) Use the recommended guidelines provided in the current “North American Emergency Response Guidebook,” or other established safety SOPs.
- 3) Finally, it is advisable to be upwind and uphill of the source, if at all possible.

c. Shielding

- 1) Maintain significant physical barriers between you and the hazard.
- 2) Shielding can be vehicles, buildings, chemical and personal protective clothing and equipment. (This includes PPE and SCBA.)

- d. Responders should use all three forms of protection, whenever possible. Do not spend excessive time in the hazard area just because you have protective equipment.

- C. Command may rely upon the hazardous materials experts in conjunction with health officials to provide the expertise necessary to accomplish the mission of neutralizing or containing the chemical compounds used in such an attack.

IV. CONCEPT of OPERATIONS

- A. Upon notification that a hazardous chemical compound has been intentionally released with terrorist intent, the first responders on scene

will make appropriate notifications as per Annex M so that initial life-saving, public safety, and fire suppression efforts may be activated.

- B. Upon notification, ADEM will activate the resources necessary to continue the operation beyond the initial response phase.
 - C. Downwind and other “hot zone” determinations will be established as soon as practical. Established procedures for all responding personnel will be adhered to in these zones. All personnel responding to the incident will report to Command, as per established procedures.
 - D. ICS will be used in response to a chemical attack.
 - E. Medical and health considerations shall be in accordance with Appendix 1 – Nuclear Terrorism Response.
 - F. “Chemical/Biological Incident” form may be use to gather Information valuable to the response. (See Attachment 1, this Appendix.)
- V. ADMINISTRATIVE SUPPORT
- A. Support of this operation will consist of assistance from all applicable local and state agencies and, when necessary, federal agencies.
 - B. Resources committed to chemical attack incidents will be determined and used in accordance with the county and state EOPs.
- VI. GUIDANCE DOCUMENTS
- A. North American Emergency Response Guidebook, current edition.
 - B. Chemical/Biological Response Handbook, 1998 edition.
- VII. ATTACHMENTS
- A-3-1: Chemical/Biological Information Form

**APPENDIX 3 – ATTACHMENT 1
CHEMICAL/BIOLOGICAL INFORMATION FORM**

1. Caller's Name and Phone Number: _____

2. Date and Time of Incident: _____

3. Reason for Report:

- | | |
|---|--|
| <input type="checkbox"/> Unusual Liquid Droplets | <input type="checkbox"/> People Dying |
| <input type="checkbox"/> People Becoming Sick | <input type="checkbox"/> Unusual Odors |
| <input type="checkbox"/> Cloud | <input type="checkbox"/> Dead, Discolored Vegetation |
| <input type="checkbox"/> Dead/Dying/Sick Birds, Animals | <input type="checkbox"/> Other |
-

3) Incident Location:

Address:

City: _____ State: _____ ZIP: _____

5. Terrain Description:

- | | | | |
|------------------------------------|-----------------------------------|---------------------------------------|--------------------------------|
| <input type="checkbox"/> Flat | <input type="checkbox"/> Desert | <input type="checkbox"/> Sparse Trees | <input type="checkbox"/> Shore |
| <input type="checkbox"/> Hills | <input type="checkbox"/> Urban | <input type="checkbox"/> Jungle | <input type="checkbox"/> River |
| <input type="checkbox"/> Mountains | <input type="checkbox"/> Suburban | <input type="checkbox"/> Forest | <input type="checkbox"/> Other |

6. Weather:

- | | | | |
|---------------------------------|--------------------------------|----------------------------------|--------------------------------|
| <input type="checkbox"/> Clear | <input type="checkbox"/> Rainy | <input type="checkbox"/> Snowing | <input type="checkbox"/> Dusty |
| <input type="checkbox"/> Cloudy | <input type="checkbox"/> Foggy | <input type="checkbox"/> Misty | <input type="checkbox"/> Other |

7. Wind:

- | | | | |
|-------------------------------|--------------------------------|-------------------------------|-------------------------------|
| <input type="checkbox"/> None | <input type="checkbox"/> Gusts | <input type="checkbox"/> High | <input type="checkbox"/> Mild |
|-------------------------------|--------------------------------|-------------------------------|-------------------------------|

8. Temperature

- | | | | |
|------------------------------|-------------------------------|-------------------------------|-------------------------------|
| <input type="checkbox"/> Hot | <input type="checkbox"/> Warm | <input type="checkbox"/> Cool | <input type="checkbox"/> Cold |
|------------------------------|-------------------------------|-------------------------------|-------------------------------|

Estimated Temperature (F): _____

9. Odor:

- | | | | |
|-----------------------------------|-------------------------------------|---|---------------------------------|
| <input type="checkbox"/> None | <input type="checkbox"/> Irritating | <input type="checkbox"/> Garlic/Horseradish | <input type="checkbox"/> |
| <input type="checkbox"/> Changing | | | |
| <input type="checkbox"/> Sweet | <input type="checkbox"/> Pepper | <input type="checkbox"/> Almond/Peach | <input type="checkbox"/> Forest |
| <input type="checkbox"/> Fruity | <input type="checkbox"/> Flower | <input type="checkbox"/> New Mown Hay | <input type="checkbox"/> Rotten |
| <input type="checkbox"/> Eggs | | | |

10. Visible Emission:

- | | | |
|--------------------------------|-------------------------------|-------------------------------|
| <input type="checkbox"/> Smoke | <input type="checkbox"/> Mist | <input type="checkbox"/> None |
|--------------------------------|-------------------------------|-------------------------------|

(Continued Next Page)

11. Unexplained Symptoms:

- | | | |
|------------------------------------|---|--|
| <input type="checkbox"/> None | <input type="checkbox"/> Tightness in Chest | <input type="checkbox"/> Stinging of Skin |
| <input type="checkbox"/> Dizziness | <input type="checkbox"/> Blurred Vision | <input type="checkbox"/> Reddening of Skin |
| <input type="checkbox"/> Fever | <input type="checkbox"/> Runny Nose | <input type="checkbox"/> Welts/Blisters on |
| <input type="checkbox"/> Skin | | |
| <input type="checkbox"/> Choking | <input type="checkbox"/> Coughing | <input type="checkbox"/> Difficulty |
| <input type="checkbox"/> Breathing | <input type="checkbox"/> | <input type="checkbox"/> Nausea and Vomiting |
| <input type="checkbox"/> Diarrhea | | |
| <input type="checkbox"/> Other: | | |

Time of Onset:

Duration of Symptoms:

12. Explosion:

- | | | | | |
|---|------------------------------|---------------------------------|------------------------------------|--------------------------|
| <input type="checkbox"/> None | <input type="checkbox"/> Air | <input type="checkbox"/> Ground | <input type="checkbox"/> Structure | <input type="checkbox"/> |
| <input type="checkbox"/> Underground | | | | |
| <input type="checkbox"/> Describe Location: | | | | |
-

Describe Device:

Military Munitions Improvised Device Other None

Describe Container Condition/Size: _____

13. Contact Incident Command and provide all information received.

Name of Person Receiving Information: _____

Terrorism Form 502

APPENDIX 4

BIOLOGICAL TERRORISM RESPONSE

I. SITUATIONS and ASSUMPTIONS

- A. The threat of a biological attack by a terrorist group poses a very real threat to society and the results can prove highly dramatic. The ability of terrorists to obtain and use a biological agent as an etiological weapon requires sophisticated, scientific skills that may not be readily available. This may be overcome by theft of biologically dangerous materials for weapons use.
- B. All threatened or suspected biological attacks must be treated as real attacks due to the damaging nature of the agents involved. These effects must not be underestimated and the handling of these incidents must involve all possible assets.
- C. These agents may be dispersed in the same manner as chemical agents and their ability to inflict a high number of casualties in enclosed areas makes them especially viable as media events.

II. DIRECTION and CONTROL

- A. All incidents involving the use, or threatened use, of biological agents will be managed in accordance with the provisions of ICS.
- B. Specific direction and expertise will be required from ADH in the initial assessment and medical services required for the response. All area hospitals and other triage facilities will be mobilized in accordance with their existing emergency plans and the identification of the agent used will be a priority task.

III. CONCEPT of OPERATION

- A. Upon report of, or the threatened use of, the employment of a biological agent in a terrorist attack, ASP and ADEM will be notified and coordination of activities will begin. The response will be based on the scale of the incident and mobilization decisions will be made as required.
- B. All necessary assets will be mobilized to support life-saving and evacuation requirements in the initial response. Upon activation of the FRP, local and state assets will act in support of the lead federal agency, as determined by the FRP.
- C. The DOD (Bio-Chem Response Team) will be activated in accordance with the procedures established by the task force under the FRP.

- D. The determination of the type of biological agent will be done as early in the incident as possible and may result from the FRP activation. This information will dictate the treatment of casualties and will be disseminated to supporting medical facilities through the command post as soon as possible.
- E. Important information regarding the biological threat will be collected using Form 501 (Appendix 3 - Attachment 1: Chemical/Biological Information Form).
- F. Response should be governed by the safety principle regarding time, distance and shielding.

IV. ADMINISTRATIVE SUPPORT

- A. Support of this operation will consist of all needed local and state agencies, in support of the federal response.
- B. Resources committed to this response will be determined and used in accordance with the C-EOP.

APPENDIX 5
CONTAMINATION of WATER SUPPLIES by TERRORISTS

I. SITUATIONS and ASSUMPTIONS

- A. The ability of terrorists to introduce toxins of any type to water supplies provides a venue for widespread impact and poses a great danger to our population. The introduction of these agents into public waters can be accomplished in a number of ways and with minimal risk of discovery.
- B. These agents may be introduced in locations where they are most readily available for consumption or in water supplies prior to treatment. Supplies may be contaminated before (or after) treatment.

II. PURPOSE

To insure adequate potable drinking water to all citizens of Baxter County and to decrease the effects of the intentional contamination of the water supply.

III. CONCEPT of OPERATIONS

- A. Local government may be able to provide estimates of available potable water and isolate those sources that are contaminated.
- B. The ADH and DEQ (Department of Environmental Quality) will provide testing expertise to determine the contaminant and suggest decontamination procedures or exclusion periods.
- C. Under command direction, the military may provide additional testing and decontamination support for the operation.
- D. Water truck/trailer resources may be available under the provisions of the county and state EOPs.
- E. Overall medical response to treat casualties resulting from an attack of this type will be coordinated by ADH. Emergency facilities will be tasked to perform in accordance with their established emergency plans.
- F. Federal response will be determined under the guidance provided in the FRP.

IV. ADMINISTRATIVE SUPPORT

Support of this operation will consist of assistance from all applicable state agencies, local government, and responding federal agencies, as per policies and procedures.